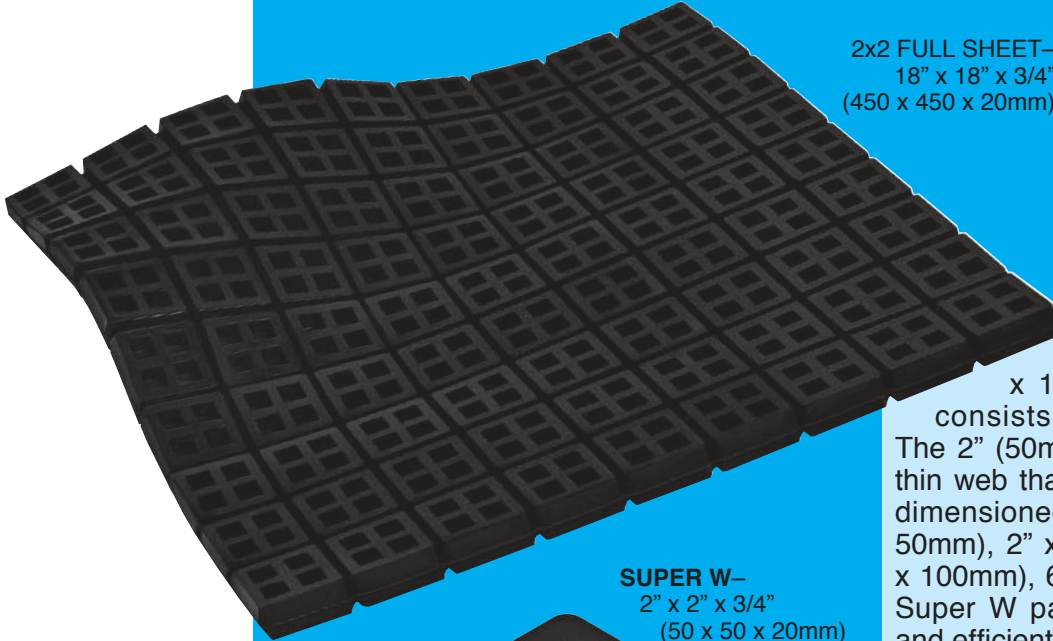
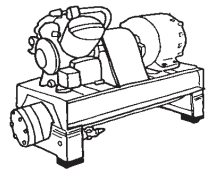
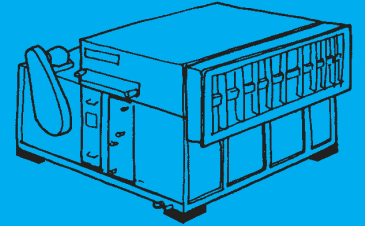




MASON SUPER W PADS



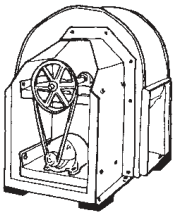
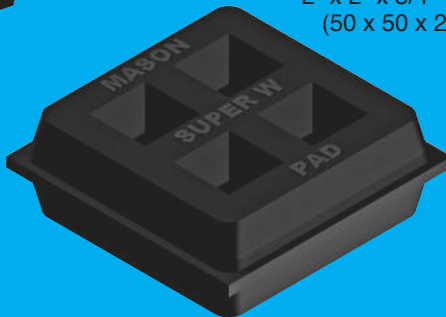
2x2 FULL SHEET—
18" x 18" x 3/4"
(450 x 450 x 20mm)



2X2 Super W Pad sheet 18" x 18" x 3/4" (450 x 450 x 20mm) consists of 81 - 2" (50mm) modules. The 2" (50mm) squares are separated by a thin web that is easily cut to provide evenly dimensioned pads such as 2" x 2" (50 x 50mm), 2" x 4" (50 x 100mm), 4" x 4" (100 x 100mm), 6" x 8" (150 x 200 mm), etc. Our Super W pad is one of the most versatile and efficient pads on the market.

The other pads in the Super W family below provide a size and thickness range of product for a wide variety of applications.

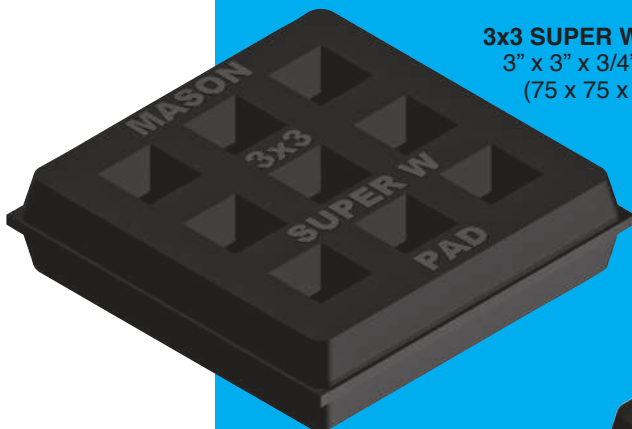
SUPER W—
2" x 2" x 3/4"
(50 x 50 x 20mm)



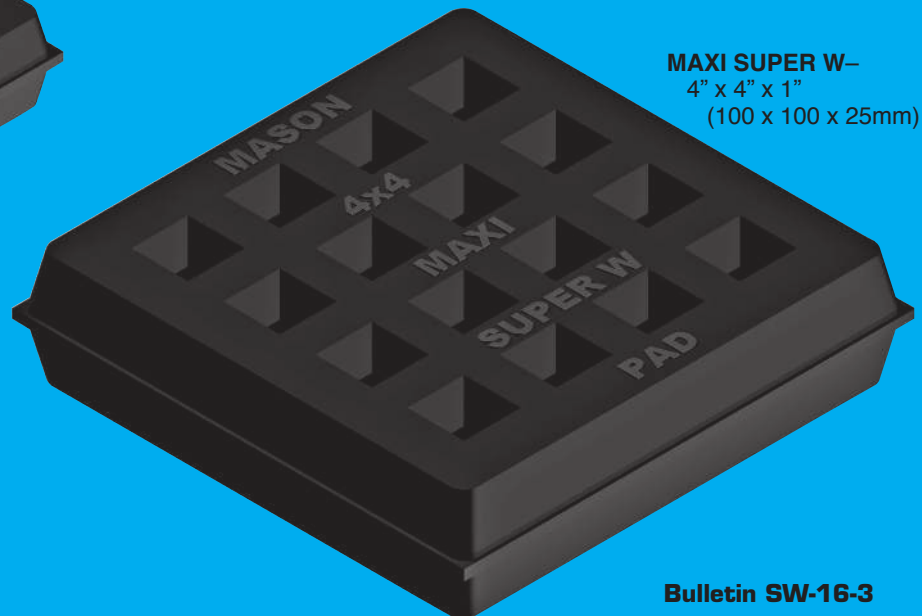
MASON SUPER W PADS ARE MOLDED IN—

- **Natural Rubber** for maximum resilience and vibration isolation. Contains anti-oxidants and anti-ozonants to improve aging.
- **Standard Neoprene** for longer life and moderate oil resistance.
- **Bridge-bearing Neoprene** for maximum life, excellent oil resistance and resiliency approaching natural rubber.

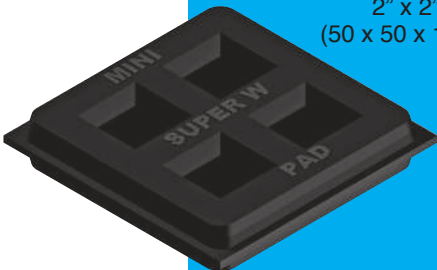
3x3 SUPER W—
3" x 3" x 3/4"
(75 x 75 x 20mm)



MAXI SUPER W—
4" x 4" x 1"
(100 x 100 x 25mm)



MINI SUPER W—
2" x 2" x 3/8"
(50 x 50 x 10mm)



There are many applications where machines are located in basements or other non-critical areas, where “some” isolation or a noise break is needed or the use of a resilient friction pad eliminates the need for bolting down.

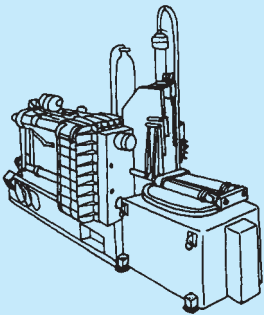
These are the locations where pads are used on a “They serve the purpose” basis.

Contractors, just like fly fishermen, all have their own ideas and preferences, so rather than offer just one all rubber thickness, we offer 3/8”, 3/4” and 1” pads in addition to a choice of 2” x 2”, 3” x 3”, and 4” x 4” square modules.

The thickest is always best and Natural Rubber the most efficient.

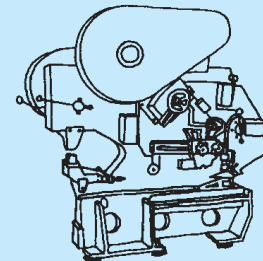
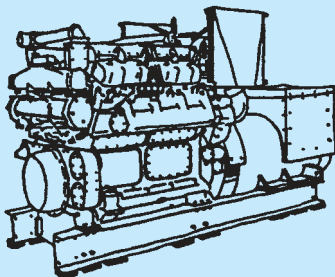
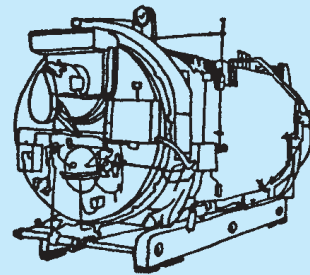
All pads are relatively inexpensive (cheap) as compared to mountings, so even our 1” thick 4x4 Super W meets that definition.

So have a ball and use whatever fits your fancy. If it’s Mason, it can’t be bad.



Pads can be used to reduce noise, high frequency vibration and impact from typical machines as follows:

- Chillers
- Compressors
- HVAC Units
- Vent Sets
- Pumps
- Motor Generators
- Transformers
- Diesel Generators
- Punch Presses
- Lathes
- Saws
- Power Presses
- Drill Presses



PADS MAY BE STACKED WITH 16 GAUGE (1.6MM) SHIMS BETWEEN LAYERS FOR INCREASED DEFLECTION.

SUPER W LOAD RATINGS PER SQUARE

DUROMETER	15% DEFLECTION							
	Load per 2" x 2" x 3/8" 50 x 50 x 10mm Square (lbs) (kgs)		Load per 2" x 2" x 3/4" 50 x 50 x 20mm Square (lbs) (kgs)		Load per 3" x 3" x 3/4" 75 x 75 x 20mm Square (lbs) (kgs)		Load per 4" x 4" x 1" 100 x 100 x 25mm Square* (lbs) (kgs)	
30	80	35	80	35	180	81	320	145
Standard 40	120	53	120	53	270	122	480	217
50	180	80	180	80	420	190	750	340
60	240	105	240	105	540	244	960	435
70	360	158	360	158	810	367	1440	653

*Estimate prior to tooling and testing

Super W Pads should be used in full squares. Select the minimum number of squares required and design pad to the most convenient square or rectangle. The use of additional squares results in more conservative loading.

American Units 2x2 Example-

Load is 650 lbs. 40 Duro capacity is 120 lbs. 650/120 = 5.42 squares (Use 6 square modules). Pad may be 2 modules x 3 modules (4" x 6") or 1 module x 6 modules (2" x 12")

Metric Units 3x3 Example-

Load is 4500 kgs. 50 Duro capacity is 190 kgs. 9000/190 = 23.6 squares (minimum). Pad may be 4 modules x 6 modules (300 x 450mm) or 3 modules x 8 modules (225 x 600mm) or 5 modules x 5 modules (375 x 375mm) etc.



MASON INDUSTRIES, INC.

350 Rabro Drive, Hauppauge, NY 11788 • 631/348-0282 • FAX 631/348-0279
 2101 W. Crescent Ave., Suite D, Anaheim, CA 92801 • 714/535-2727 • FAX 714/535-5738
 Email info@Mason-Ind.com • Website www.Mason-Ind.com